



86-1

20

RRC 6

Top Elev: 2356'

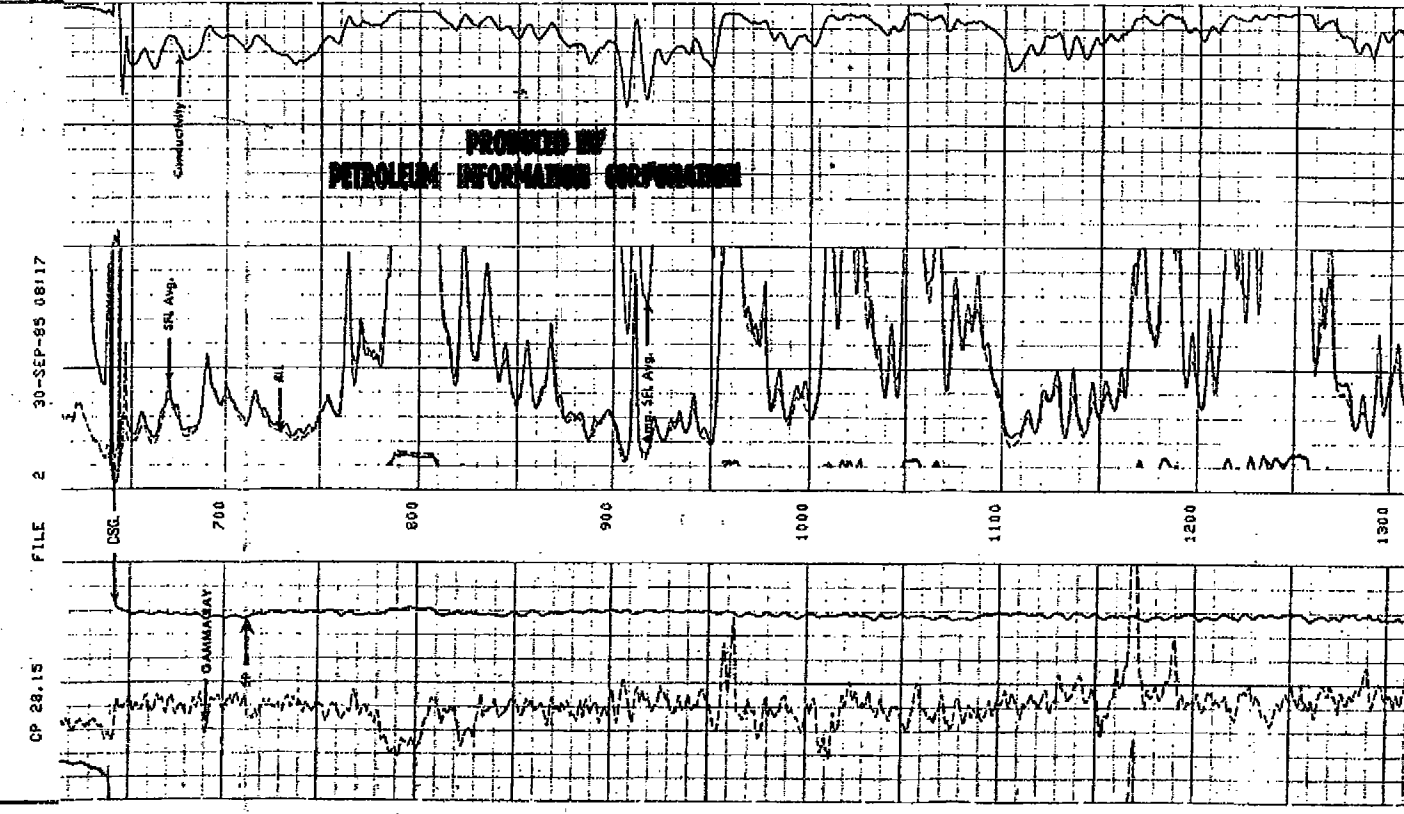
 DUAL INDUCTION/ DENSITY/ NEUTRON/ GR CSI	
COMPANY: FAIR OIL COMPANY WELL: CHRISTIAN DUBOSE UNIT 1 FIELD: SATURN COUNTY: GONZALES STATE: TEXAS LOCATION: 4530*FEL & 2280*FSL OF JOHN SLATE SUR. A-435 PERMANENT DATUM: ELEV. OF PERM. DATUM: 347.0 F LOG MEASURED FROM: RKB 10.0 F ABOVE PERM. DATUM DRLG. MEASURED FROM: DATE: 30 SEP 85 RUN NO: 1	177-31630 OTHER SERVICES-CORES PROGRAM TYPE NO: 28.15 SERVICE ORDER NO: 452115 OCT 21 1985 DEPTH-DRILLER: 5920.0 F DEPTH-LOGGER: 5920.0 F BTM. LOG INTERVAL: 5914.0 F TOP LOG INTERVAL: 642.0 F CASING-DRILLER: 631.0 F CASING-LOGGER: 642.0 F CASING: 8 3/8" WEIGHT: 7 7/8" BIT SIZE: 7 7/8" DEPTH: 5920.0 F


GULF COAST WELL LOG SERVICE
 HOUSTON-NEW ORLEANS
 LAFAYETTE

95179M
 LIQID 9.40 LB/G
 DENSITY 40.0 S
 VISCOSITY 8.5
 PH 6.0 CS
 FLUID LOSS: 2.180 OHMM AT 79.0 DEGF
 RMT 4.310 OHMM AT 79.0 DEGF
 SOURCE OF SAMPLE: PRESS/CHART
 SOURCE RNF/RMC: 1.529 OHMM AT 155. DEGF
 RM AT BHT: 1.861 OHMM AT 155. DEGF
 RNC AT BHT: 2.288 OHMM AT 155. DEGF
 TIME CIRC. STOPPED: 24100 9/29
 TIME LOGGER ON BTN: 5:11 9/30
 MAX. REC. TEMP: 155.0 DEGF
 LOGGING UNIT NO: 5877
 LOGGING UNIT LOC: BRENNAN
 RECORDED BY: FREEMAN
 WITNESSED BY: SYMON & HARD

REMARKS: DEPTH INVALID FROM 514 TO 5565 Due TO SHALE BUILD UP ON SKD. OPERATOR AT YOUR SERVICE: COPELIN THANKS FOR USING SCHLUMBERGER!
 EQUIPMENT NUMBERS-
 DIS 387 BIC-455 DRS-3819 LSR-7068
 CRC-1259 CCG-777 SOTL-454

ALL INTERPRETATIONS ARE OPINIONS BASED ON INFERENCES FROM ELECTRICAL OR OTHER MEASUREMENTS AND WE CANNOT AND DO NOT WARRANT THE ACCURACY OR CORRECTNESS OF ANY INTERPRETATIONS AND WE SHALL NOT BE RESPONSIBLE FOR ANY LOSS OR DAMAGE INCURRED BY ANY PARTY AS A RESULT OF ANY INTERPRETATIONS MADE BY ANY OF OUR OFFICERS, AGENTS OR EMPLOYEES. THESE INTERPRETATIONS ARE ALSO SUBJECT TO OUR GENERAL TERMS AND CONDITIONS AS SET OUT IN OUR CURRENT PRICE SCHEDULE.
 CP 28.15 FILE 6 30-SEP-85 09150
 GR CORP 150.00
 SP SHV 40.000
 -150.0 SP 40.000 SCALE
 -80.00 4408 20.00 CHANGES
 CILD:MMHD 0.0



05-1

TGS



